

Implementing layered cybersecurity in healthcare



Highly regulated and entrusted with the most sensitive data, healthcare providers need cybersecurity and resilience without compromise.

In recent years the volume of cyberattacks against US hospitals has doubled^[1]. And no other critical sector is targeted by as many ransomware attacks as healthcare^[2].

Layered security from OpenText Cybersecurity offers integrated solutions that protects against these threats.

It also offers the ease and rapid set-up that you'd expect from a leader in cyber security and resilience.

Layered security at a glance

Prevention

Securing your devices, your people, and your domain name services



Webroot Endpoint Protection



Webroot DNS Protection



Webroot Security Awareness Training

Protection

Securing your communications and all corporate data



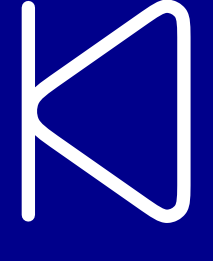
Webroot Advanced Email Encryption powered by Zix



Webroot Advanced Email Threat Protection and Email Continuity

Recovery

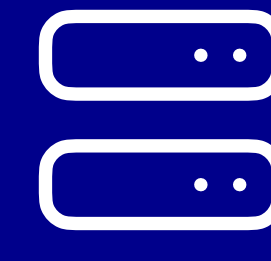
Protecting your data and business continuity



Carbonite Recover



Carbonite Cloud-to-Cloud Backup



Carbonite Server Backup

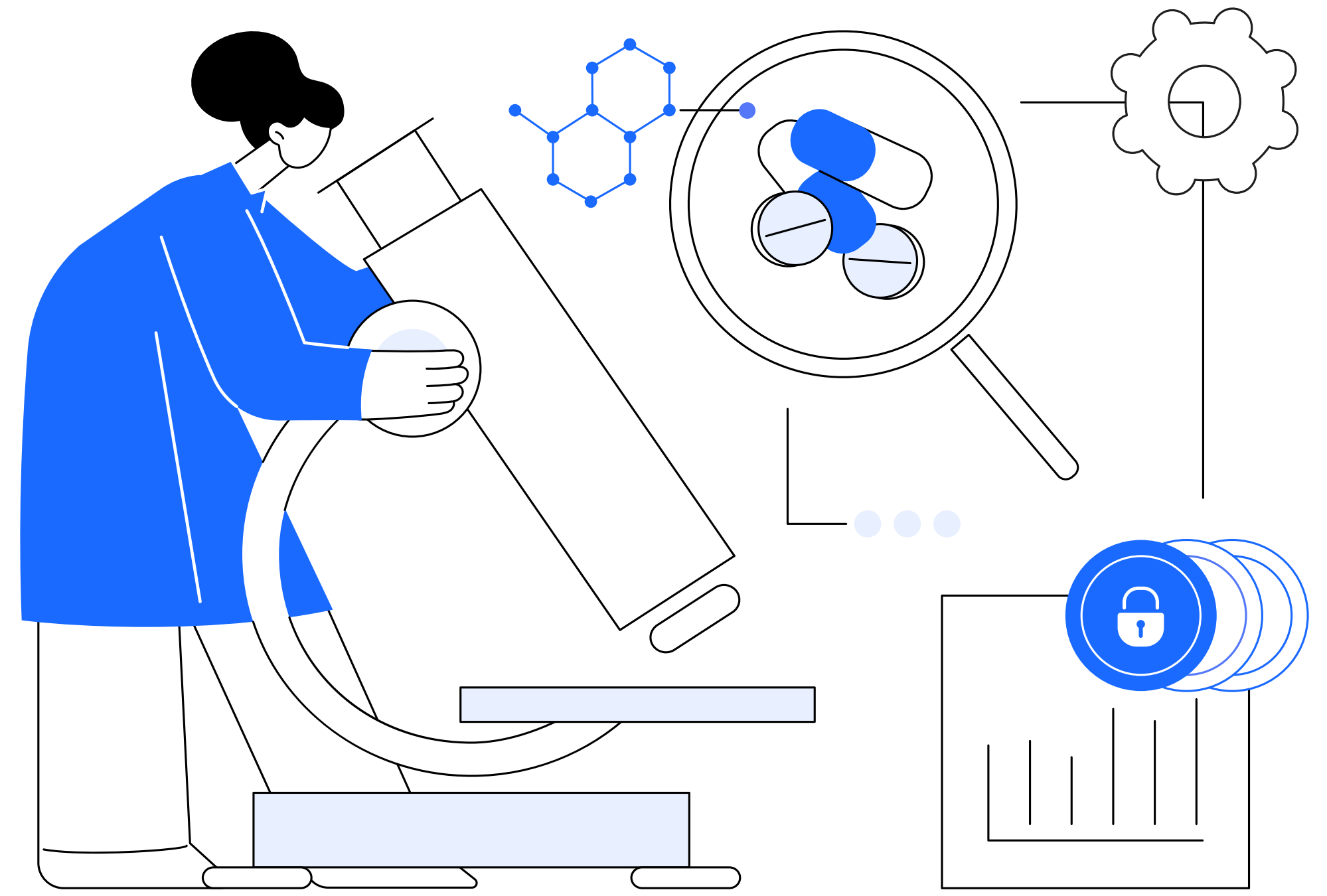
Powered by leading technologies in cybersecurity



Layered security made simple and smart

Deploying, monitoring and scaling the products and services required for comprehensive, workforce-wide layered cybersecurity is quick and easy.

Secure Cloud, our intuitive control center, allows you to manage your organization's security measures with OpenText Cybersecurity products. Policy control and smart automation allow administrators and users to be up and running rapidly.



Access leading products



Monitor security performance



Get threat intelligence insights

Get demo

Discover how a layered cybersecurity approach can benefit your organization and patients.

1. <https://www.weforum.org/agenda/2023/05/cyber-attacks-on-healthcare-rise-zero-trust>

2. <https://www.fiercehealthcare.com/health-tech/new-jama-study-scrapes-dark-web-find-true-frequency-healthcare-ransomware-attacks>